

An aerial photograph showing a dense mangrove forest with a winding river. In the bottom left, there is a large building with a bright blue roof. In the bottom right, a portion of a building with a green roof is visible. The background shows a residential area with several houses and palm trees.

**Leone Wetland & Mangrove Restoration
Project
Governor's Biodiversity Conservation Office**

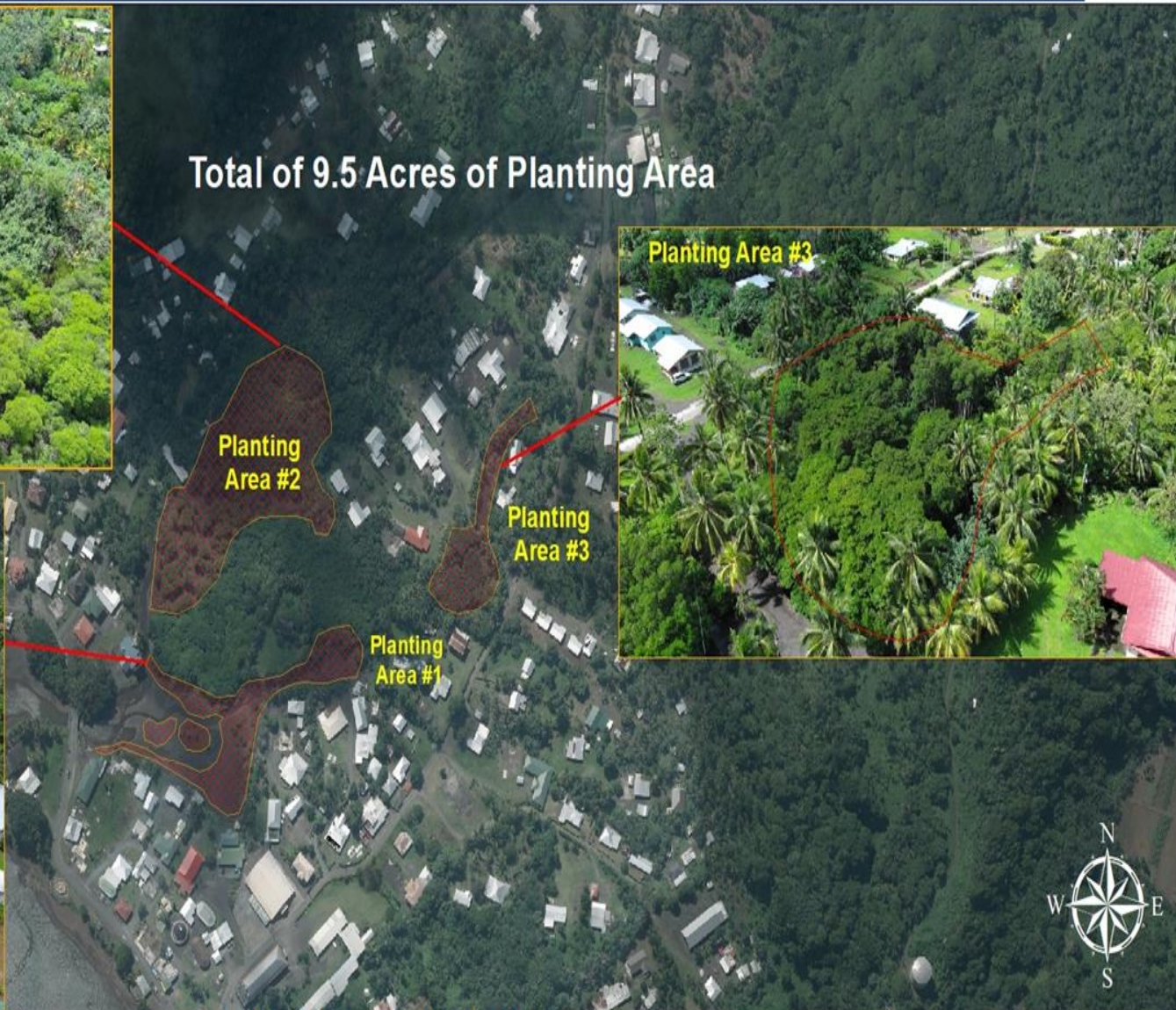
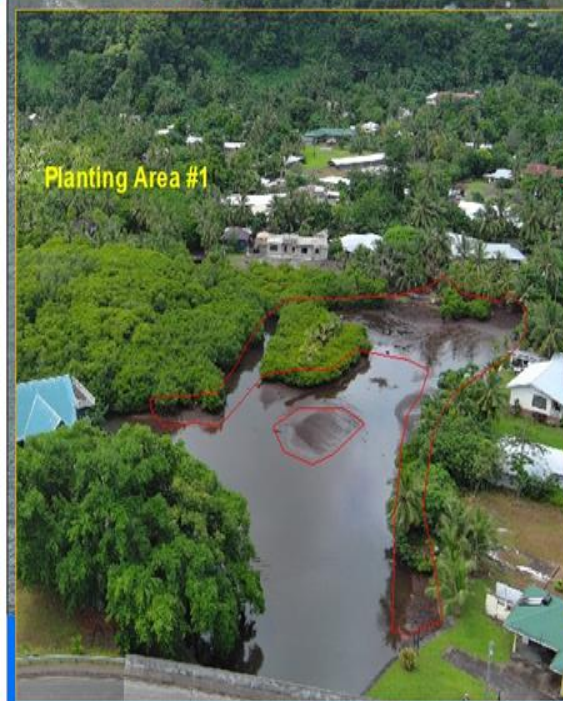


Governor's Biodiversity Conservation Office

Leone Wetland Planting Location



Total of 9.5 Acres of Planting Area



0 0.04750.095 0.19 Kilometers



American Samoa Wetland & Mangrove Restoration



Removing wastes from the Wetlands



High School Students replanting mangrove trees species

Nu'uuli Poly-tech High School

