



UNITED STATES  
DEPARTMENT OF TRANSPORTATION  
Office of Intelligence, Security, and Emergency Response (S-60)

# USDOT National Transportation Response & Recovery Program and ESF-1 Overview



# Emergency Support Functions

- **ESF #1: Transportation**
  - Department of Transportation
- **ESF #2: Communications**
  - Department of Homeland Security (DHS)
- **ESF #3 \*: Public Works and Engineering**
  - Department of Defense/U.S. Army Corps of Engineers
- **ESF #4: Firefighting**
  - Department of Agriculture/Forest Service
- **ESF #5 \*: Emergency Management**
  - DHS/Federal Emergency Management Agency (FEMA)
- **ESF #6: Mass Care, Emergency Assistance Housing, and Human Services**
  - DHS/FEMA, American Red Cross
- **ESF #7 \*: Logistics Management and Resource Support**
  - DHS/FEMA, General Services Administration
- **ESF #8 \*: Public Health and Medical Services**
  - Department of Health and Human Services
- **ESF #9 \*: Search and Rescue**
  - DHS/FEMA
- **ESF #10 \*: Oil and Hazardous Materials Response**
  - Environmental Protection Agency
- **ESF #11: Agriculture and Natural Resources**
  - U.S. Department of Agriculture
- **ESF #12 \*: Energy**
  - Department of Energy
- **ESF #13: Public Safety and Security**
  - Department of Justice
- **ESF #14 \*: Cross-sector Business and Infrastructure**
  - DHS/Federal Emergency Management Agency (FEMA)
- **ESF #15: External Affairs**
  - DHS

\*Indicates DOT as support agency

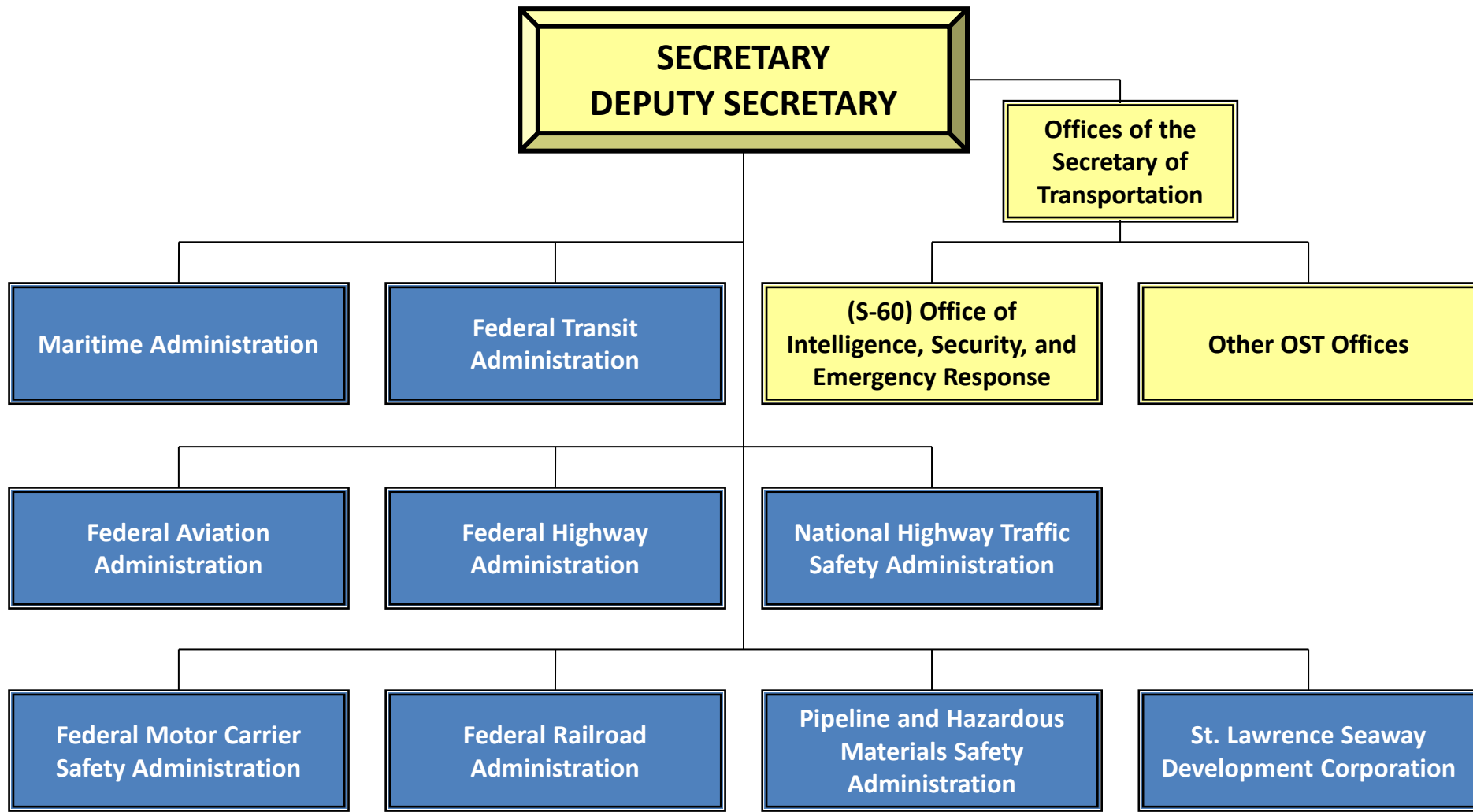


# Emergency Support Function 1

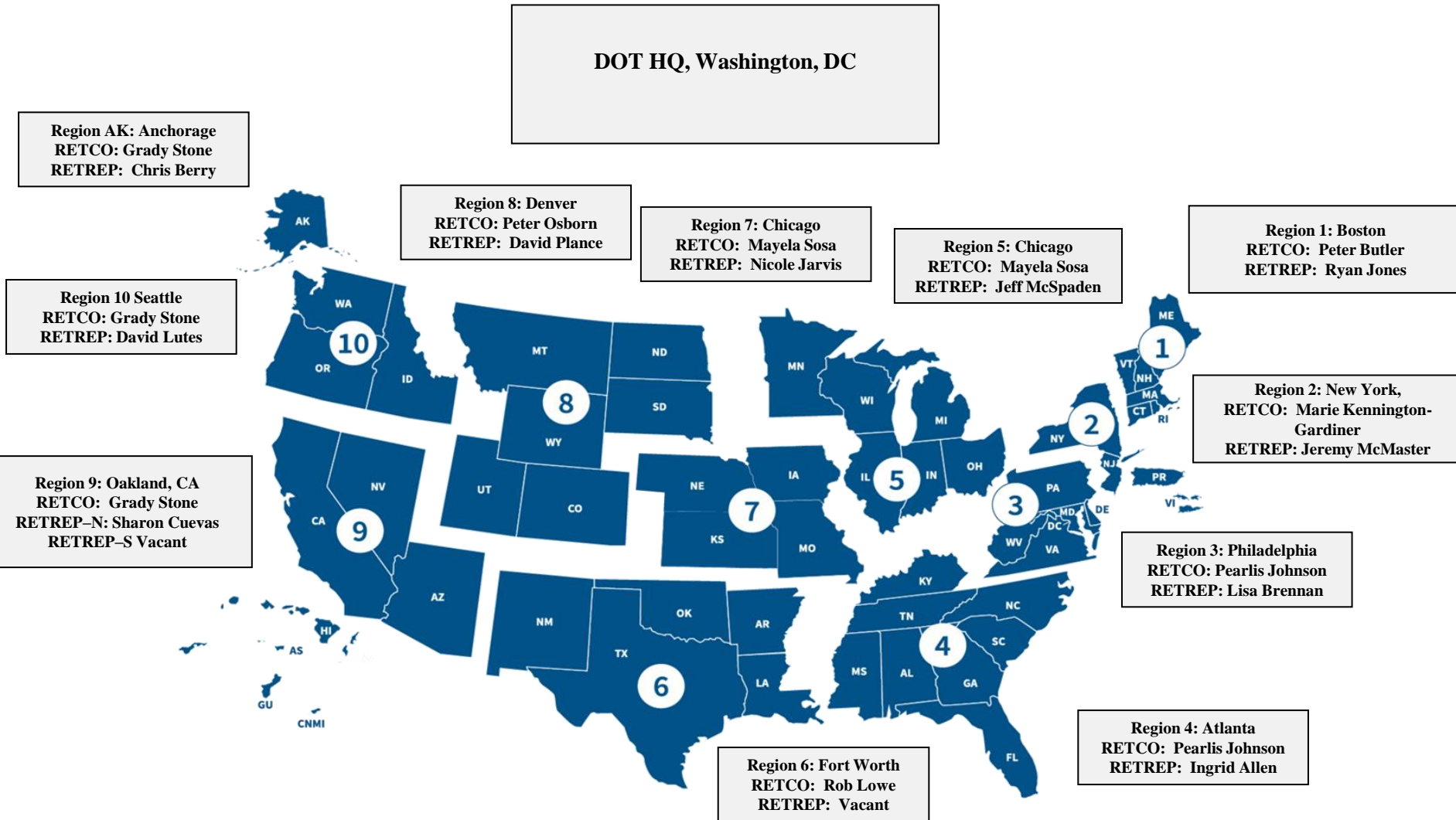
- Monitor and report status of and damage to the transportation system and infrastructure
- Identify temporary alternative transportation solutions that can be implemented by others
- Perform activities conducted under the direct authority of DOT elements
- Coordinate the restoration and recovery of the transportation system and infrastructure
- Coordinate and support prevention, preparedness, response, recovery, and mitigation activities among transportation stakeholders



# USDOT Operating Administrations



# National Transportation Response and Recovery Program





# USDOT Capabilities

## Technical Assistance

- NTRRP Personnel
- Air Navigation Services
- Evacuation Liaison Team
- Joint Damage Assessment Teams
- Emergency Relief Funding

## Regulatory Relief

- Federal Motor Carrier Waivers
- HazMat Special Permits
- Oversize/Overweight Permits (facilitate)
- Toll Relief (facilitate)
- Temporary Flight Restrictions
- Railroad Inspection Relief
- Jones Act Waiver Concurrence

## Assets

- MARAD Ready Reserve Fleet
- Operation SafeStor
- Mobile Air Navigation Services assets
- Washington Flight Program




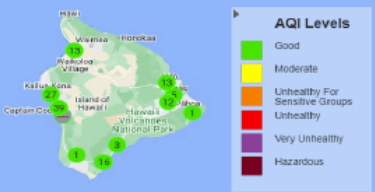
# NTRRP Activities

- National Special Security Events
  - Nuclear Security Summit
  - Major Sports Championships
- Activations
  - COVID-19
  - Tropical Storm Cristobal
  - Puerto Rico Earthquake swarm
  - Hurricanes Dorian, Michael, Florence, Olivia, Lane, Beryl, Isaac, Harvey, Irma, Maria, and Nate response operations
  - Super Typhoons Mangkhut and Yutu response operations
  - Puerto Rico recovery operations
  - Wildfires in CA, ID, OR, and WA
  - Kilauea Volcano Eruption response
  - Oroville Dam, CA dam spillway failure
  - Mauna Loa Volcano Eruption
  - Atmospheric Rivers
  - Typhoon Mawar – Guam
  - Hurricane Hilary
  - Maui Fires
- Exercises
  - National Level Exercise 2019 – New Madrid Earthquake
- Meetings/Conferences
  - FEMA RISC Meetings
  - Regional OneDOT Meetings
  - National Hurricane Conference
- Non-Traditional Activities
  - OS/OW Permitting for MHUs (Louisiana Flooding and Hurricane Recovery in NC and FL)



– Hurricane Douglas (remotely)

# HAWAII MAUNA LOA ERUPTION COP: STATEWIDE (as of 12/08/22, 1030)

EOC Activation Levels (as of 12/08/22)					Current Situation <i>*Blue text is new information*</i>	Future Planning
State	Maui	C & C	Kauai	Hawaii	<p><b>State Updates:</b></p> <ul style="list-style-type: none"> <li>12/7 – Fire Weather Watch in effect for Leeward areas of all islands. Very dry fuels combined with developing windy trades and low relative humidity's may produce critical fire weather conditions Thursday and Friday. Winds will decrease over the weekend.</li> <li>12/8 – As of 0340 High pressure north of the islands will bring strong trade winds the next couple of days, delivering a few windward showers, mainly night and morning. Breezy trade winds over the weekend may deliver a slight increase in showers on Sunday.</li> </ul> <p><b>Hawaii County Updates:</b></p> <ul style="list-style-type: none"> <li>12/7 – All areas adjacent to DK1 Highway, Old Saddle Road are CLOSED and prohibited from public access due to safety hazards.</li> </ul> <p><b>Hawaiian Volcano Observatory (HVO) Updates:</b></p> <ul style="list-style-type: none"> <li>12/7 – The Northeast Rift Zone eruption of Mauna Loa continues. One active fissure, fissure 3, is feeding a lava flow downslope.</li> </ul>	<p>Situational awareness &amp; assessments requested regarding:</p> <ul style="list-style-type: none"> <li>Threats to infrastructure (communication, power, transportation routes, and water/wastewater) and other key resources.</li> <li>Current status of evacuation plans (schools/reunification, populations)</li> <li>Economic Impacts; Supply Chain (DK1 Hwy interruption)</li> <li>Life and environmental safety.</li> <li>Agricultural impacts.</li> </ul>
Full Activation	Normal OPNS	Normal OPNS	Normal OPNS	Full Activation		
<p><b>SESFs Activated</b></p> <p>11/28 – ALL SESFs activated as of 0700.</p>						
<p><b>State Operational Priorities</b></p> <p><i>*Updates made to objectives &amp; priorities are indicated by a subscript*</i></p> <ol style="list-style-type: none"> <li>Save lives and minimize suffering.</li> <li>Maintain situational awareness of threats, operations and environmental/cultural impacts.</li> <li>Maintain clear and coordinated messaging.</li> <li>Support requests for assistance and information in a timely manner.</li> <li>Collect information for current and future planning purposes.</li> <li>Process information for action.</li> </ol>						
<p><b>Problem/Impact/Solution/Timeline (P.I.S.T.) Items</b></p> <ul style="list-style-type: none"> <li>Potential closure of Daniel K. Inouye (DK1) Highway – update on planning/preparation.</li> <li>Air quality monitoring (DOH) – update on planning/preparation.</li> <li>Infrastructure Access Control – confirm/receive SOP in place for access to closed off areas.</li> </ul>					<p><b>Volcanic Activity</b> Source: USGS</p>  <p>Current Volcano Alert Level: <b>WARNING</b></p> <p>The Northeast Rift Zone eruption of Mauna Loa continues with a major change overnight. The fissure 3 (F3) vent continues to erupt but the supply of lava appears to be much reduced this morning. Lava is overtopping channels near the vent with flows extending no farther than 2.5 mi (4 km) from the vent.</p> <p>Per USGS, as of 0530 on 12/08, the flow front was stalled about 1.7 mi (2.8 km) from the Daniel K. Inouye Highway (Saddle Road). The lava flow is now inactive for most of its lower length, but the flow front may appear to advance a little as it settles.</p>	<p><b>Priority RFA/RFIs</b></p> <p><i>*Blue text is new information*</i></p> <ul style="list-style-type: none"> <li>RFA #100828 – Supplement to Emergency Proclamation by DLNR; requirement for HIEMA or other entity to support justification for emergency road clearance measures</li> <li>RFI #100824 – DOH Air Quality Liaison to HCCDA EOC by Hawaii County, no elevation of request to HING</li> <li>RFI #100821 – Rangefinder for Flow Front by Hawaii County needs more specificity</li> <li>RFI #100817 – Logistics requesting SITREP from ESF-1 for Hilo Harbor</li> <li>RFA #100787 – Acquisition of SO2 Air Monitors by DOE, urgent status expect update 12/08 after meeting ESF10 meeting between EPA and DOH, follow up DOH for who requires invite from HIEMA and HI County</li> <li>RFA #100700 HCCDA requests Air Operations Support to coordinate access of all aviation, both commercial and private) into Mauna Loa Temporary Flight Restriction (TFR) area. 12/6: Maui County is providing resource; HI-EMA Logistic and Resilience Branch Chiefs coordinating administrative and financial details.</li> </ul> <p><i>*If you represent an SESF that has an open RFA/RFI, please review in WebEOC and provide updates and close out when completed.*</i></p>
<p><b>Air Quality Status</b> Source: DOH</p>  <p><a href="https://air.doh.hawaii.gov/home/map">https://air.doh.hawaii.gov/home/map</a>, as of 0830, 12/08/22</p>						



# CA/NV Atmospheric Rivers

- **Partner Coordination**
  - NWS Updates
  - Heavy Rain, Wind, Fog
  - River cresting/peaking
  - Burn scars, debris flows
  - Power Outages
  - Numerous Road Closures
  - Evacuation Routes
  - Lime Transport & Water Quality
- **Army Corps of Engineers**
  - Dept of Water Resources
  - Levee breaches/overflows
  - Dam releases
- **FAA**
  - Air Operations
  - Search & Rescue
  - TFRs, NOTAMs, Safety
  - Coordination w/ military
  - GIS Access, inundation models
- **Cultural Sensitivities**
  - Who owns what
  - Local vs Highways
  - Public Messaging
  - Education/barricades/cones
  - Economic Impacts (Ag)
- **Political Awareness**
  - State Air Ops requests FAA
  - MA vs Agency Authorities
  - Agency Interrelationships
  - Deconflict: railroads/local streets, local bridges/dams
  - Highway Message Boards (VMS) use
- **FHWA & ER Funds**
  - ER Limits, \$700,000 trigger
  - Quick Release
  - Strategies to access
  - ER vs Stafford Act Funds

#HINews #HNN - at Mauna Kea.



 **Hawaii News Now**  · [Follow](#) ⋮  
Suggested for you · 10h · 

Wow! We never grow tired of seeing photos of Mauna Kea covered in snow.

This photo was submitted to us by Windell Egami, a CFHT instrument engineer, trying to make it up the summit with his team on Wednesday.



**LOST ANGELES**

[Join](#)

⋮

Roban Poirier · 6d · 

If you are planning to go to Mammoth, Bishop, or Lone Pine,  
**DON'T!!**  
**!!!!!!!!!!!!!!**



# Federal Aviation Administration in Puerto Rico

The FAA's Center Radar Approach Control (CERAP) and other air navigation assets in the mountains of Puerto Rico, Pico del Este and El Yunque.

- Critical air navigation system for the entire Caribbean.
- Roadway to both sites critically damaged.
- Refueling of the generator at the top of the mountain required helicopter and/or ATV support.
- The long-term fix was a combined project with Department of Energy, Department of Agriculture, The Puerto Rico Department of Public Works, and the Puerto Rico electric company (PREPA).
  - DOE and PREPA laid cabling underground.
  - USDA responsible for a large section of the roadway.
  - DOT and Puerto Rico Department of Public Works worked with USDA to plan and fund the roadway.



Coordination resulted in more resilient infrastructure!

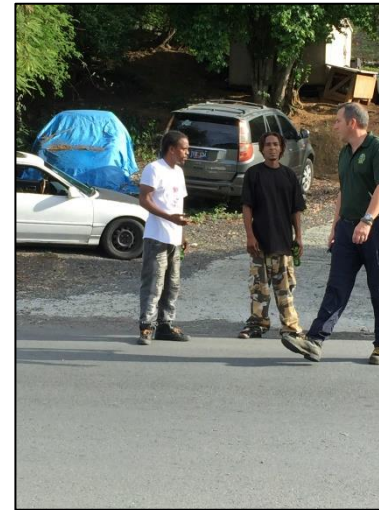
# Federal Aviation Administration in the USVI

- **St. Croix Engine Generator Replacements:**
  - St. Croix Airport (4)
- **St. Thomas Engine Generator Replacements:**
  - Airport Radar Site (ASR),
  - Very High Frequency (VHF) Omni-Directional Range (VOR), and
  - Localizer (LOC)
  - Airport Traffic Control Tower (ATCT)
- **Future Disaster :**
  - Two portable generators (1 for St. Croix and 1 for St. Thomas)





# USVI (Saint Thomas) Response (2017)



- **First hand examples of deployment operations during Hurricane Irma**
- **Power outage before the arrival of the storm created unique challenges**

# Questions?

# Contact Information

## DFS-West Regional Emergency Transportation Representatives (RETREP)

### Sharon Cuevas – RETREP

Federal Highway Administration

N. California and the Pacific (primary)

AZ, NV (back-up)

202-923-0974 (cell)

e-mail: [sharon.cuevas@dot.gov](mailto:sharon.cuevas@dot.gov)